

Craftsman air compressor owners manual

Owner's Manual
CRAFTSMAN
AIR COMPRESSOR
26-gallon
1.5 HP
Oil-Free, Direct Drive
Model No. 921.164710



CAUTION:

Before using this product, read this manual and follow all its Safety Rules and Operating Instructions.

- Safety Instructions
- Installation & Operation
- Maintenance & Storage
- Troubleshooting Guide
- Parts List

Sears Brands Management Corporation, Hoffman Estates, IL 60179 U.S.A.
www.sears.com/craftsman

9/08/2011
Part No. 101-0344

File Name: Craftsman air compressor owners manual.pdf

Size: 3427 KB

Type: PDF, ePub, eBook

Category: Book

Uploaded: 30 May 2019, 14:38 PM

Rating: 4.6/5 from 670 votes.

Download Now!

Please check the box below to proceed.



I'm not a robot



reCAPTCHA
Privacy - Terms

Book Descriptions:

Craftsman air compressor owners manual



You can unsubscribe at any time. You can unsubscribe at any time. Accessory Kit Warranties Tool Storage During the warranty time period specified below, this product is warranted against defects. Download the FREE Craftsman Smart Garage Door Opener app Craftsman Smart Garage Door Opener. If you do not find what you're looking for on this page, please call our customer service team for prompt answers to your question. Learn about the illustrious legacy that is CRAFTSMAN Tools and how it's helping to shape, mold, meld and forge our future. Follow us as we journey across America introducing new products and opening new. If for any reason you are not satisfied, simply return your purchase in its original packaging, with. You can unsubscribe at any time. You can unsubscribe at any time. Page Count 27 If this air compressor is used for commercial or rental purposes, the warranty will apply for ninety days from the date of purchase. This warranty gives you specific legal rights and you may have other rights which vary from state to state. Sears, Roebuck and Co., Dept. 817WA, Hoffman Estates, IL 60119 D24588 2ENG Some dust created by power sanding, sawing, grinding, drilling, and other construction activities contains chemicals known to the State of California to cause cancer, birth defects or other reproductive harm. OIL LEAKS WILL DAMAGE CARPET, PAINT OR OTHER SURFACES IN VEHICLES OR TRAILERS. HOW TO PREVENT IT ALWAYS PLACE COMPRESSOR ON A PROTECTIVE MAT WHEN TRANSPORTING TO PROTECT AGAINST DAMAGE TO VEHICLE FROM LEAKS. CFM Cubic feet per minute. SCFM Standard cubic feet per minute; a unit of measure of air delivery. PSIG; Pounds per square inch gauge; a unit of measure of pressure. Code Certification Products that bear one or more of the following marks UL, CUL, ETL, CETL, have been evaluated by OSHA certified independent safety laboratories and meet the applicable Underwriters Laboratories Standards for Safety. <http://lusitanissimo.com/userfiles/flymo-push-mower-manual.xml>

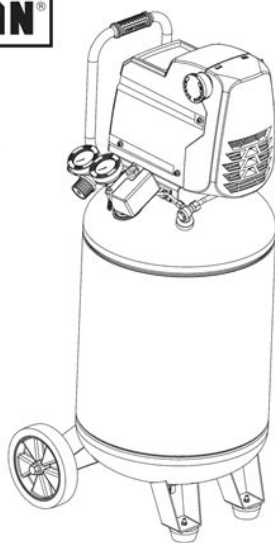
- craftsman air compressor owners manual, sears air compressor owners manual,

craftsman air compressor service manual, craftsman 6 gallon air compressor owners manual, craftsman air compressor model 919 owners manual, craftsman 3 gallon air compressor owners manual, craftsman 26 gallon air compressor owners manual, craftsman air compressor model 921 owners manual, craftsman 2 gallon air compressor owners manual, craftsman 33 gallon air compressor owners manual, craftsman air compressor owners manual, craftsman air compressor owners manual, craftsman air compressor owners manual, old craftsman air compressor owners manuals, owners manual for craftsman air compressor, craftsman air compressor owners manual 16915, craftsman 26 gal air compressor owners manual.

Owner's Manual



AIR COMPRESSOR
20-gallon
1.5 HP
Oil-Free, Direct Drive
Model No. 921.169130



CAUTION:
Before using this product,
read this manual and follow
all its Safety Rules and
Operating Instructions.

- Safety Instructions
- Installation & Operation
- Maintenance & Storage
- Troubleshooting Guide
- Parts List
- Español, p. 10

Sears Brand Management Corporation, Hoffman Estates, IL 60179 U.S.A.
www.sears.com/craftsman

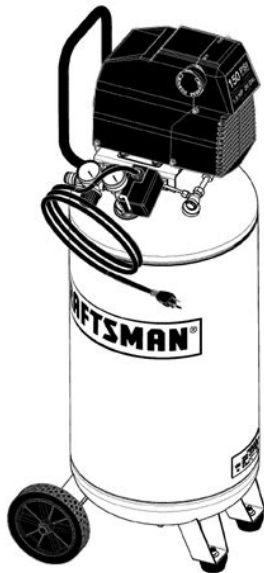
2/16/2012
Part No. F176172

CutIn Pressure While the motor is off, air tank pressure drops as you continue to use your accessory. When the tank pressure drops to a certain low level the motor will restart automatically. **CutOut Pressure** When an air compressor is turned on and begins to run, air pressure in the air tank begins to build. It builds to a certain high pressure before the motor automatically shuts off, protecting your air tank from pressure higher than its capacity. **Branch Circuit** Circuit carrying electricity from electrical panel to outlet. This unit is capable of powering the following Accessories. The accessories are available through the current Power and Hand Tool Catalog or fullline Sears stores. Air compressors should be operated on not more than a 50% duty cycle. This means an air compressor that pumps air more than 50% of one hour is considered misuse, because the air compressor is undersized for the required air demand. Maximum compressor pumping time per hour is 30 minutes. **9ENG D24588** The wheels and handle do not provide adequate clearance, stability or support for pulling the unit up and down stairs or steps. The unit must be lifted, or pushed up a ramp. **Assemble Rubber Feet !.** Attach rubber feet with the screws provided as shown in previous figure, 2. Tighten securely. **D24588 10 ENG** The air compressor pump and shroud are designed to allow for proper cooling. The ventilation openings on the compressor are necessary to maintain proper operating temperature. Do not place rags or other containers on or near these openings, The air filter must be kept clear of obstructions which could reduce air flow to the air compressor. This air compressor must be properly grounded. The portable air compressor is equipped with a cord having a grounding

wire with an appropriate grounding plug see following illustrations. The plug must be used with an outlet that has been installed and grounded in accordance with all local codes and ordinances..<http://pilot-market.ru/new/files/flymo-power-trim-500-xt-manual.xml>

Owner's Manual

CRAFTSMAN
AIR COMPRESSOR
26-gallon
1.5 HP
Oil-Free, Direct Drive
Model No. 921.164710



CAUTION:

Before using this product, read this manual and follow all its Safety Rules and Operating Instructions.

- Safety Instructions
- Installation & Operation
- Maintenance & Storage
- Troubleshooting Guide
- Parts List

Sears Brands Management Corporation, Hoffman Estates, IL 60179 U.S.A.
www.sears.com/craftsman

9/08/2011
Part No. 101-3344

The cord set and plug with this unit contains a grounding pin. This plug MUST be used with a grounded outlet. IMPORTANT The outlet being used must be installed and grounded in accordance with all local codes and ordinances.. Make sure the outlet being used has the same configuration as the grounded plug. Do not modify the plug provided. If it does not fit the available outlet, a correct outlet should be installed by a qualified electrician. The use of extension cords will cause voltage to drop resulting in power loss to the motor and over heating. Instead of using extension cords attach extra air hoses to each other starting at the air outlet. DO NOT USE 14 OR 16 AWG. Voltage and Circuit Protection Refer to the specification table for the voltage and minimum branch circuit requirements. If any of the above conditions cannot be met, or if operation of the compressor repeatedly causes interruption of the power, it may be necessary to operate it from a 20 amp circuit. It is not necessary to change the cord set. Compare the illustrations with your unit to familiarize yourself with the location of various controls and adjustments. Save this manual for future reference.

Switch Safety Valve Description of Operation Become familiar with these controls before operating the unit. This pressure is controlled by the regulator and is always less than or equal to the tank pressure.

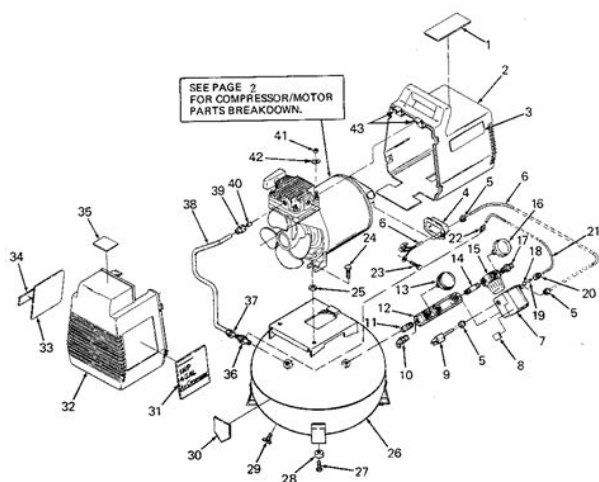
Tank Pressure Gauge The tank pressure gauge indicates the reserve air pressure in the tank.

Regulator Controls the air pressure shown on the outlet pressure gauge Pull the knob out and turn clockwise to increase pressure and counter clockwise to decrease pressure. When the desired pressure is reached push knob in to lock in place.

Drain Valve The drain valve is located at the base of the air tank and is used to drain condensation at the end of each use.

Cooling System not shown This compressor contains an advanced design cooling system. At the heart of this cooling system is an engineered fan.

It is perfectly normal for this fan to blow air through the vent holes in large amounts. You know that the cooling system is working when air is being expelled. 33ENG D24588 Working air is not available until the compressor has raised the air tank pressure above that required at the air outlet. If the overload protector shuts the motor off frequently, check for a possible voltage problem. Low voltage can also be suspected when 1. The motor does not get up to full power or speed. 2. Fuses blow out when starting the motor; lights dim and remain dim when motor is started and is running. The pressure release valve allows the motor to restart freely. When the motor stops running, air will be heard escaping from this valve for a few seconds. Release Valve Motor Overload Protector The motor has an automatic reset thermal overload protector. If the motor overheats for any reason, the overload protector will shut off the motor. The motor must be allowed to cool down before restarting. NOTE; If quick connect is installed, pull coupler back until it clicks to prevent air from escaping through the quick connect. 2. Plug the power cord into the correct branch circuit receptacle, Refer to Voltage and Circuit Protection paragraph in the Installation section of this manual. 3. Open the drain valve fully counterclockwise to permit air to escape and prevent air pressure buildup in the air tank during the breakin period. NOTE; Always drain tank on a washable surface or in a suitable container to prevent damaging or staining surfaces. Make sure the drain valve is open and there is minimal air pressure buildup in tank. 6, After 15 minutes, close the drain valve clockwise. Push knob in to lock in place. Attach hose and accessories. NOTE The hose or accessory will require a quick connect plug if the air outlet is equipped with a quick connect. Too much air pressure causes a hazardous risk of bursting. Check the manufacturer's maximum pressure rating for air tools and accessories.

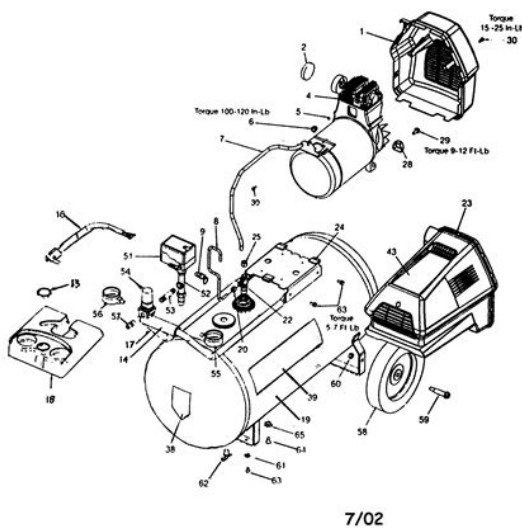


<https://www.informaquiz.it/petrgenis1604790/status/flotaganis23052022-0021>

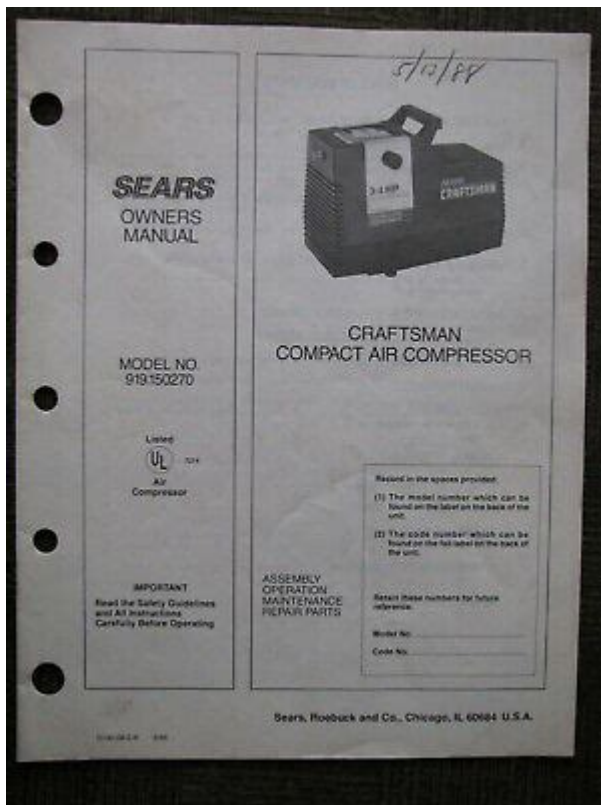
When the desired pressure is reached push knob in to lock in place. The compressor is ready for use. NOTE Always operate the air compressor in wellventilated areas free of gasoline or other combustible vapors. If the compressor is being used to operate a sprayer DO NOT place near the spray area. 15ENG D24588 Personal injuries can occur. Before performing any maintenance or repair, disconnect power source from the compressor and bleed off all air pressure. To ensure efficient operation and longer life of the air compressor outfit, a routine maintenance schedule should be prepared and followed. The following routine maintenance schedule is geared to an outfit in a normal working environment operating on a daily basis. If necessary, the schedule should be modified to suit the conditions under which your compressor is used. The modifications will depend upon the hours of operation and the working environment. D24588 To Check Safety Valve If the safety valve does not work properly, overpressurization may occur, causing air tank rupture or an explosion. 1. Before starting compressor, pull the ring on the safety valve to make sure that the

safety valve operates freely. The air compressor can now be stored. NOTE If drain valve is plugged, release all air pressure. The valve can then be removed, cleaned, then reinstalled. Air Filter Inspection and Replacement Hot surfaces. Risk of burn. Compressor heads are exposed when filter cover is removed. Allow compressor to cool prior to servicing. A dirty air filter will not allow the compressor to operate at full capacity. Keep the air filter clean at all times. 1. Remove the air filter retainer. 2. Remove the air filter and make sure it is clean. IMPORTANT Do not operate the compressor with the air filter removed. 3. If dirty, rinse air filter with warm water and squeeze dry. 4. Replace air filter and air filter retainer. NOTE If the air filter is extremely dirty it will need to be replaced.

<https://www.kroatien-crooliday.de/images/99-cummins-auto-to-manual-swap.pdf>



Air Compressor Pump Intake and Exhaust Valves Once a year have a Trained Service Technician check the air compressor pump intake and exhaust valves. Filter 17 ENG e24588 Personal injuries can occur. Before performing any Maintenance or repair, unplug the compressor and bleed off all air pressure. To Replace or Clean Check Valve 1. Release all air pressure from air tank. Carefully move outlet tube away from check valve. 5. Using an adjustable wrench, loosen pressure relief tube nut at air tank and pressure switch. Note the orientation for reassembly. 7. Using a screwdriver, carefully push the valve disc up and down. NOTE; The valve disc should move freely up and down on a spring which holds the valve disc in the closed position; if not the check valve needs to be cleaned or replaced. In closed position disc is visible. 8. Clean or replace the check valve. A solvent, such as paint or varnish remover can be used to clean the check valve. 9. Apply sealant to the check valve threads, Reinstall the check valve turn clockwise. 10. Replace the pressure release tube. Tighten nut. 11. Replace the outlet tube and tighten nut. 12. Replace the shroud and air filter 13. Perform the Breakin Procedure. Gauge 6, Assemble the regulator and orient as shown. NOTE Arrow indicates flow of air. Reassemble outlet pressure gauge and quick connect. Orient outlet pressure gauge to read correctly. Tighten quick connect with wrench. 19ENG D24588 Water will condense in the air tank. If not drained, water will corrode and weaken the air tank causing a risk of air tank rupture. 7. After the water has been drained, close the drain or drain valve. NOTE. If drain valve is plugged, release all air pressure. The valve can then be removed, cleaned, then reinstalled. 8. Protect the electrical cord and air hose from damage such as being stepped on or run over. Wind them loosely around the compressor handle. If so equipped Store the air compressor in a clean and dry location. Personal injury may occur.



Prior to attempting any repairs, unplug the air compressor and bleed off all air tank air pressure. PROBLEM CAUSE CORRECTION Excessive tank pressure safety valve pops off., i Air leaks at fit tings. Air leaks at or inside check valve Air leaks at pressure switch release valve. Air leaks in air tank or at air tank welds, Air leaks between head and valve plate. Check valve seat damaged. Defective pressure switch release valve. Contact a Trained Service Technician. Tighten fittings where air can be heard escaping. Check fittings with soapy water solution. A defective check valve results in a constant air leak at the pressure release valve when there is pressure in the tank and the compressor is shut off. Contact a Trained Service Technician, Air tank must be replaced. Do not repair the leak. Do not drill into, weld or otherwise modify air tank or it will weaken. The tank can rupture or explode. Contact a Trained Service Technician. 21 ENG 024588 Knocking Noise. Compressor is not supplying enough air to operate acces sories. Possible defect in safety valve. Defective check valve, Prolonged excessive use of air. Compressor is not large enough for air requirement. NOTE Adjust the regulated 3ressure under flow condi tions while accessory is bein 9 used. Operate safety valve manual ly by pulling on ring. If valve still leaks, it should be replaced. Remove and clean, or replace. Decrease amount of air usage. Clean or replace air intake fil ter. Do not operate the air compressor with the filter removed. Check the accessory air requirement. Check and replace if required. Remove and clean, or replace. Tighten fittings. Regulator knob Damaged regulator Replace has continuous air leak.Loose electrical connections Possible defective motor or starting capacitor. Pressure release valve on 3ressure switch has not unloaded head pressure. Fuse blown, circuit breaker tripped. Remove and clean, or replace.

Check wiring connection inside pressure switch and terminal box area, Have checked by a Trained Service Technician. Have checked by a Trained Service Technician. Do not operate the compressor in the paint spray area. See flammable vapor warning. Reset circuit breaker. Page Count 3 CRAFTSMAN Air compressor Manual. CRAFTSMAN Air compressor Owners Manual. CRAFTSMAN Air compressor installation guides. Download the manual. Craftsman 921.153101. PDF Manual

Download for Free. Download Air Compressor Owners Manual of CraftsmanShop for CRAFTSMAN OPERATORS MANUAL AIR. COMPRESSOR repair parts for model 919728000 at Sears. Sears PartsDirect has parts. AIR COMPRESSOR Model. Electrical Diagnostic door opener according to instructions contained in the owners manual. Sears Compressor Owners Manual. File Type Extension pdf. PDF Version 1.4. Linearized No. Author Softplicity. Subject. Page Count 3. Page Mode UseOutlines. Description. Creator Softplicity. Title Sears Compressor Owners Manual. Creator Tool Softplicity. Keywords. Producer Softplicity. Download the manual Products 1 50 of 57 Craftsman Air Compressor 919.17673g. Craftsman Air Compressor Owners Manual. Pages 18. See Prices SEARS. OWNERS. MANUAL. MODEL NO. 919.176210. 919,176311. If this air compressor fails due to a defect in material or workmanship within one year View and Download Craftsman 919.176730 owners manual online. Craftsman Air Compressor Owners Manual. 919.176730 Air Compressor pdf manual 25 Aug 2012 Shop the best selection of Craftsman air compressors repair parts and accessories at Sears PartsDirect. Find replacement parts for any Craftsman air Craftsman 919.167551 Pdf User Manuals. View online or download Craftsman 919.167551 Owners Manual. Permanently Lubricated Air Compressor. Related Searchesair compressor craftsman,air compressor,craftsman Shop for CRAFTSMAN OPERATORS MANUAL AIR COMPRESSOR repair parts for model 919728000 at Sears PartsDirect.Reload to refresh your session.

<https://laneopx.com/wp-content/plugins/formcraft/file-upload/server/content/files/16286a73b5f739---Cabela-s-tournament-zx-casting-reel-manual.pdf>

Reload to refresh your session. Please try again.Please try again.Please try again. Then you can start reading Kindle books on your smartphone, tablet, or computer no Kindle device required. In order to navigate out of this carousel please use your heading shortcut key to navigate to the next or previous heading. Register a free business account To calculate the overall star rating and percentage breakdown by star, we don't use a simple average. Instead, our system considers things like how recent a review is and if the reviewer bought the item on Amazon. It also analyzes reviews to verify trustworthiness. And by having access to our ebooks online or by storing it on your computer, you have convenient answers with Sears Craftsman Air Compressor Manual. To get started finding Sears Craftsman Air Compressor Manual, you are right to find our website which has a comprehensive collection of manuals listed. Our library is the biggest of these that have literally hundreds of thousands of different products represented. I get my most wanted eBook Many thanks If there is a survey it only takes 5 minutes, try any survey which works for you. Sears, as a retailer, also sells other brands including Ingersoll Rand and Campbell Hausfeld compressors, among others. Other brands have their own pages on this site. Do you have one to share. Use the contact form to reach me, if you do and I'll upload it here. Click the appropriate link to download that compressor manual to your computer. Save the download so you have it for future reference. Is this a campbell hausfeld compressor that I could cross reference to try and find parts. This doesn't have the tongue shape reed valve, it has 2 small spring pressured plates or plugs that open and close. Thank you for any info. Rick Eggers I bought this compressor used and the belt is pretty old, so I'm going to go ahead and replace it. The belt is basically smooth, but the replacement belts I've found have teeth.

www.cruiseride.com/userfiles/files/breitling-navitimer-heritage-user-manual.pdf

I don't know if the old belt had teeth that were just worn off with time or not. I've seen pulleys and flywheels that have teeth, but mine are smooth.I tried to get an owners manual via Sears Parts Direct on line. The response was that I needed to have the model number to order it however I was unable to locate it. I asked where I would find it on the machine. The response I got was that it usually consists of three digits, a decimal point, and six to eight more digits. I was not able to locate the Model number.Issues common to all and by the compressor make.

<http://www.bouwdata.net/evenement/boss-loop-rc-20xl-manual>