



**File Name:** Cal pump pc50 manual.pdf

**Size:** 2314 KB

**Type:** PDF, ePub, eBook

**Category:** Book

**Uploaded:** 13 May 2019, 19:39 PM

**Rating:** 4.6/5 from 722 votes.

# Download Now!

Please check the box below to proceed.



I'm not a robot



reCAPTCHA  
Privacy - Terms

## Book Descriptions:

### Cal pump pc50 manual



UL listed control panel has a 50 power cord with standard 115v plug. On the left side two 115v plugs that are GFI protected and operate off a digital timer ideal for splitters, fountains, etc. In the center are two 115v plugs that are GFI protected and have a constant power supply ideal for pumps, UVs, etc. The Right side is low voltage transformer for underwater lights. GFI transformer is rated for 150 watts. Operate pumps, UVs, fountains and underwater lights safely and easily with one unit.

Weather resistant enclosure for outdoor use. This is how the set warns you that it can no longer do timer recordings. Setting the clock and doing an autoprogram will fix it, but both the remote and the remote receiver must be working. I have seen many of those little receivers failing recently. If you do not have experience changing electronic parts on small PC boards then have a qualified tech change it for you. Login to post Please power cycle the unit as well by unplugging it from the wall and leaving it of for a couple of minutes. Once done, test the remote control again. To delete the recorded programs, please follow the steps below 1. Press the BD button on the remote control then press Home. This should bring up the home screen. 2. On the Homescreen, choose AllShare Play and press the Enter Button. 3. On AllShare Play, scroll down to Recorded TV and choose HDD. 4. Now the titles of the recorded programs will appear. 5. Press the Tools on the remote control and select Delete from the side menu. 6. Select the titles to be deleted by highlighting them, then press the Enter button on the remote control. 7. Select Delete from the side menu then confirm deletion. To try and resolve this issue, please reset the remote control. To do so, please refer to the instructions below 1. Remove the batteries from the remote control. 2. Hold down the Power button for a full minute. 3. Once done, put the new batteries back in and test the remote

control. [http://aryajob.com/user\\_upload/diagnostic-statistical-manual-of-mental-disorders-dsm-iv-tr.xml](http://aryajob.com/user_upload/diagnostic-statistical-manual-of-mental-disorders-dsm-iv-tr.xml)

- cal pump pc50 manual, cal pump pc50 instructions.



Please power cycle the unit as well by unplugging it from the wall and leaving it of for a couple of minutes. To delete the recorded programs, please follow the steps below

1. Press the BD button on the remote control then press Home. This should bring up the home screen.
2. On the Homescreen, choose AllShare Play and press the Enter Button.
3. On AllShare Play, scroll down to Recorded TV and choose HDD.
4. Now the titles of the recorded programs will appear.
5. Press the Tools on the remote control and select Delete from the side menu.
6. Select the titles to be deleted by highlighting them, then press the Enter button on the remote control.
7. Select Delete from the side menu then confirm deletion.

HDReady LCD TV We cant find the reset button NOTE Repeat the previous two steps until the component responds. It may take 70 tries until the correct code is located. When the component responds, press the ENT button. This has happened before and it seems to reset its self or after i turn the pump breaker off it resets. What is going on Go to the outside power center located at the equipment. Now press the filter pump button. Turn it off and on several times to make sure the relay is working correctly. If not, replace the relay. If this does not work, you could call Jandy and have them flash your board with the newest software. Youll be prompted to reset if Press PASSENGER COOLER button until "RFA" is displayed, then press FAN UP. If "RFA DATA" is displayed, press FAN DOWN. If "RFA OVERRIDE" is displayed, press FAN UP. Press warmer button on climate control unit until "99" is displayed. While holding TRUNK button, press LOCK button and hold for one second. Hold both buttons for a total of 3 seconds. Locks cycle when programming is complete if remote is not programmed within 30 seconds after entering "99" override display, system will default and you must begin again at step 2. Repeat step

4. <http://gemtown88.com/PicOther/diagnostic-statistical-manual-of-mental-disorders-limits.xml>

**SAFETY GUIDELINES**  
**⚠ WARNING ⚠**

**WARNING:** If installation involves running wiring through a building structure, special wiring methods are needed. Consult a qualified electrician.

To reduce the risk of electrical shock, connect the product to a properly grounded, grounding-type receptacle. Never remove or disable the grounding pin of the cord plug.

The National Electric Code and many local building codes require the use of a ground fault circuit interrupter (GFCI) on the branch circuit supplying fountain equipment rated above 15 volts.

To reduce the risk of fire, replace only with a 15A, 125V fuse.

Do not use with dimmers.

Disconnect all power supplies before servicing.

**INSTALLATION**  
**⚠ WARNING ⚠**

1. Choose a dry and protected area to locate the power control center.
2. Mount the power control center at least 3 feet above ground level, using the bosses on the back for convenience.
3. Plug the power control center directly into a properly grounded, grounding-type receptacle equipped with a GFCI.

**OPERATION**  
**⚠ WARNING ⚠**

**NOTE:** The minimum setting time is one minute and the maximum setting time is 24 hours. There are a total of six ON-OFF settings. The light will stay lit during the programming for 1 minute.

Pressing the MODE button (Figure 2) scrolls through the following options:

- PRO - Programming mode
  - RUN - Starts the automatic program
  - ON - Manual operation
  - OFF - Turns timer and outlets off
1. Connect the power cord to a 120 VAC, 60 Hz wall outlet.
  2. Press the RESET button once to clear all programs.

**INTRODUCTION**

This instruction sheet provides you with the information required to safely own and operate your Cal Pump product. Retain these instructions for future reference.

The Cal Pump product you have purchased is of the highest quality workmanship and material, and has been engineered to give you long and reliable service. Cal Pump products are carefully tested, inspected, and packaged to ensure safe delivery and operation. Please examine your item(s) carefully to ensure that no damage occurred during shipment. If damage has occurred, please contact the place of purchase. They will assist you in replacement or repair, if required.

**READ THESE INSTRUCTIONS CAREFULLY BEFORE ATTEMPTING TO INSTALL, OPERATE, OR SERVICE YOUR CAL PUMP PRODUCT. KNOW THE PRODUCT'S APPLICATION, LIMITATIONS, AND POTENTIAL HAZARDS. PROTECT YOURSELF AND OTHERS BY OBSERVING ALL SAFETY INFORMATION. FAILURE TO COMPLY WITH THESE INSTRUCTIONS COULD RESULT IN PERSONAL INJURY AND/OR PROPERTY DAMAGE!**

**DESCRIPTION**

The power control center (Figure 1) provides three power options:

- two 110-volt outlets on a digital, programmable timer
  - two 110-volt outlets that are constantly on
  - one low-voltage outlet on a digital, programmable timer
- Maximum amperage for the 110-volt outlets is 10 amps total. The low-voltage outlet has a maximum output of 150 watts and is ideal for running Cal Pump Egglites (or any 12VAC lights up to 150 watts) in either an underwater or dry application. The power control center is available with either a 50' (PC50) or 15' (PC50-15) power cord. It is suitable for indoor or outdoor use.

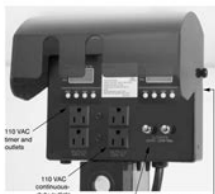


Figure 1

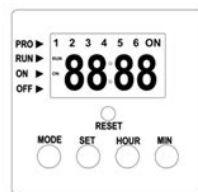
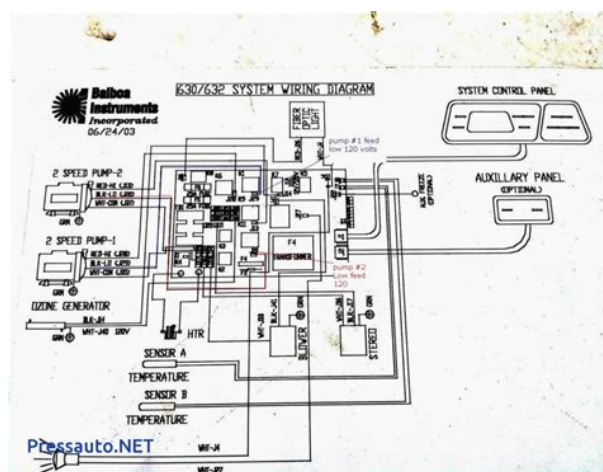


Figure 2

Use these instructions if your DeVille has a Digital Instrument Cluster Instrument Panel Cluster IPC will light all telltales, go blank then enter DIAGNOSTIC MODE. Press FAN DOW button to scroll through system until "RFA" is displayed, then press FAN UP button. Press FAN DOWN button until "RFA OVERRIDE" is displayed, then press FAN UP button. When "NO OVRD RF 500" is displayed, then press FAN UP button. System is now ready to program remote. While holding TRUNK button, press LOCK button and hold for one second. Locks cycle when programming is complete if remote is not programmed within 30 seconds after entering "99" override display, system will default and you must begin again at step 2. Disclaimer HDReady LCD TV Is this an error Contradicts everything else Ive read. The plastic cover is off and it looks as there is a technic to remove or can I force it off The plastic cover is off and it looks as there is a technic to remove or can I force it off I am trying to winterize it using the karcher antifreeze. Answer questions, earn points and help others. Now you can control the operation of your pumps, U.V. Clarifiers, underwater lights, and other necessary items with the Power Control Center. The ultimate luxury to power your pond. One of the biggest problems with installing a pond is to add electricity near the pond. Now with this Power Control Center you have 50 ft of Grounded Cord. This means 50 ft from your current electrical outlet. Also, you have 4 110V electrical outlets and 2 12V low voltages outlets. And get this, there is are 2 digital timers 1 for the 110V and 1 for the 12V side.. Every pond owner or builder should have one of these.Pros None Cons None Valves Ultima II Filters 2in. Read Our Story Did you know. A biological pond filter is beneficial for every pond, with or without fish. View our pond filters today. Learn more Show off your pond We would love for you to submit your photo to our flickr album.

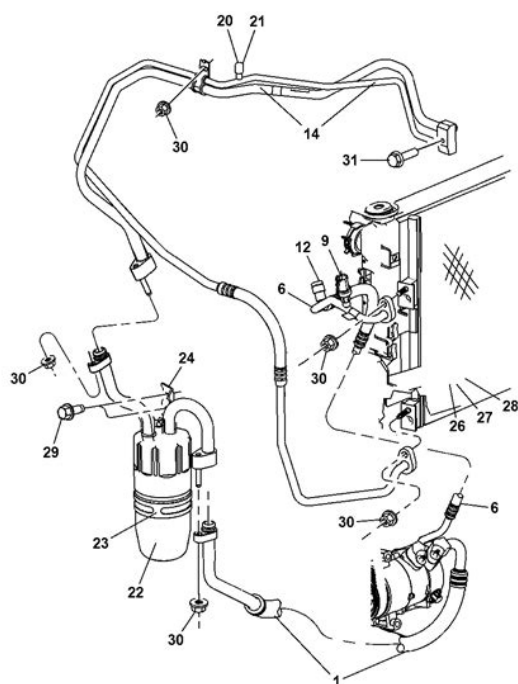
We know how much pride you take in your ponds please share with us. Submit a Photo Ponding 101 Our Ponding 101 guide includes FAQs and basic rules of thumb as well as conversion charts which will help with sizing. Learn more Why buy from us Visa MC Discover Paypal AMEX NEED HELP. Also, you have 4 120V electrical outlets and 2 12V low voltages outlets. And get this, there is are 2 digital timers 1 for the 120V and 1 for the 12V side. These transformers eliminate the risk of electrical shock to children and animals if the cable is accidentally damaged or cut. Transformer is solid state and may cause flickering with some LED fixtures. There are mounting bosses on the back of the unit for convenient installation. It is recommended that the Power Control Center PC5015 be mounted at least 3 feet above ground level. You may plug the unit directly into a properly grounded,

groundingtype receptacle equipped with a Ground Fault Circuit Interrupter GFCI. There are a total of six ON/OFF positions. The light will stay lit during the programming for one minute. RUN Automatic Operation ON/OFF In the event of a programming malfunction, press the RESET button. This will clear all programs. Repeat STEPS 1 through 9 to program timer. Consult as a qualified certified electrician The design of an underwater luminaire supplied from a branch circuit either directly or by way of a transformer meeting the requirements of this section shall be such that, where the luminaire is properly installed without a groundfault circuit interrupter, there is no shock hazard with any likely combination of fault conditions during normal use not relamping. The transformer shall be an isolated winding type with an ungrounded secondary that has a grounded metal barrier between the primary and secondary windings.” Nothing happens at all and... Please see our Privacy Policy for more information. Thank You! All rights reserved. Web site development by Innovative Internet Marketing Solutions.



<http://www.raumboerse-luzern.ch/mieten/3m-espe-capmix-manual>

Shaft Seal FTSP Intake, with mounting boss, 1, Polyethylene Was 101903SPBS12HF10 Battery Backup System Two Piece Steel With 3in Vent and Discharge CK Includes 186101 Bushing Cord 16FT Egglight Cord 1Hole Cord, 2Hole, AH OR AK Oil, Nylon, Black Capacitor, 2.00 Seal Shaft SLVFTSP266000, 438380. Since our founding, thanks to user input, we've made continual improvements to our sprayer, boom and component designs. Because of these improvements we have a large number of designs in use. This section is arranged to help you find the exploded view and parts list you need. We've organized it into large categories of sprayers, booms, accessories and pumps with subcategories. Try the main category for the item you are looking for first and then drill into the subcategory. As always, if you can't find what you are looking for here, give us a call and we'll assist you in getting the information you need. We sell parts through our dealer network so you will need to contact your SDI dealer to order. No parts of this manual may be reproduced or transmitted in any form without the expressed written permission of COSMED Srl. Each copy of the COSMED Software can only be installed on one computer. Excel is a registered trademark of Microsoft Corporation. DBIII is a registered trademark of Bordland International Inc. Lotus 123 is a registered trademark of Lotus Development Corporation. K5 User manual, I Edition. COSMED Srl Italy Table of contents. 3. Getting started. 9 Absolute contraindications. 12. Relative contraindications. 12 Installation. 25 K5 standard packaging. 26 Long Distance bluetooth module standard packaging. 27 Safety warnings. 29. Use the charger. 29 Recharge time. 29. Recalibration. 30. What is recalibration and why is it needed. 30 Powering. 30. Top side. 30. Front side. 31. Bottom side. 31 Patient's preparation. 34 Fixing HR elastic belt on the subject. 35. Fixing the mask to the subject's face. 35. Positioning ECG electrodes if an ecg is used. 35. Connecting the K5 to the PC.



37How to contact COSMED.38. Complaints, feedback and suggestions.38. K5 Operation. 39Search into the database.43. Backup the database.43. Erase the database.43. Consult the database status.43Calibration. 45Perform a turbine calibration. 45Recommendations for exercise testing. 48Laboratory. 48. Ending the test. 48Before testing. 48. Patient assent. 48. Ending the test. 48. Performing a test. 49. Download a test on the PC. 50System maintenance. 53Transmission to technicians. 55. Crosscontamination. 55. Tuberculosis. 55. Haemoptysis and oral lesions. 55. Other known transmissible infectious diseases. 55. Disposable inline filters. 55Standard cleaning procedure. 56Preparing the disinfecting solution. 57Cleaning the turbine. 57. Disinfecting the ID28 turbine. 57. Precautions to take when cleaning, disinfecting and drying the turbine. 58Disassembling the mask. 58. Cleaning the mask. 58. Table of contents Important notices 5Sterilizing the mask.59. Reassembling the mask and components.59Appendix. 63Safety.69Quality Assurance.69. Medical Device Directive CE mark.69Portable Unit.70. Battery charger Unit.70. Flowmeter.70. Oxygen Sensor O2.70. Carbon Dioxide Sensor CO2.70. Humidity absorber.70. Power Supply battery charger.71. Battery.71. Environmental Sensors.71. Wireless Connectivity.71References.72Gas Exchange.73. Indirect Calorimetry.73Oximeter. 73. Table of contents Important notices 7The measurement of oxygen uptake during sport or real life activities is of great interest for the development of training programs and the study ofA common method for assessing the effects of endurance training is the monitoring of various respiratory parameters during submaximal exercise. One difficulty to achieve this goal during sport that cannot be simulated in the laboratory is to use a reliable and valid portable system to measure. VO<sub>2</sub> and VCO<sub>2</sub> in a field setting. Such a portable apparatus may also be useful to determine the energy cost of many sport and real life activities.





K5 is an electrical medical device designed for the measurement of cardio respiratory and physiological parameters at rest and during exercise onNote When used on animals, K5 is not considered a medical device according to the current regulations. In case,It is to be used by physicians or by trained personnel on a physician responsibility. Note K5 have not to be intended as a monitoring device. It is not intended to be used for continuous surveillance ofCaution Federal law restricts this device to be sold by the order of a physician. This equipment is intended to be used for the following applications. COSMED Srl is not responsible for incidents which occur due to improper use of this device. Examples includeThe device, program algorithms and presentation of the measured data has been developed in accordance with the specifications outlined by the. ATS American Thoracic Society and ERS European Respiratory Society. Additional international references have also been applied whereThis User Manual has been developed in accordance with the Class IIa European Medical Device Directive requirements. The precautions listed below should be noted before operating the device to ensure the safety of the user.The manufacturer does not warranty any nonauthorized accessories used byDamaged electrical parts must be replaced immediately byAny dust orNote the pressure gauge for the regulator. The physical condition of the regulator, threads and fittingsAny dust or dirt on the regulator or cylinder valve should be removed with a clean cloth. TheThe user can only replace the external battery as described in theAspiration of contaminantsIf the recommended disposable antibacterial filters are not used, you must disinfect each part coming intoThis is not an AP or APG device according to the EN 60 6011If this is necessary, you must verify that the device continues toDo not use other cables since they cannot guarantee this insulation and they can cause serious injuries to the patient.

Please do not use K5 and send it backLocked. Applied part type BF EN606011. Class II device EN606011. Unlocked. Recording. Device code. Serial number. USB connector. Read the user manual. Power connector dc. Warning. Getting started Important notices 11Performing forced expiratory manoeuvres involved in spirometry testing may be contraindicated in certain conditions.Absolute contraindications. Acute MI within 2 days. Highrisk unstable angina. Uncontrolled cardiac arrhythmias causing symptoms of hemodynamic compromise. Active endocarditis. Symptomatic severe aortic stenosis. Decompensated symptomatic heart failure. Acute pulmonary embolus or pulmonary infarction. Acute noncardiac disorder that may affect exercise performance or be aggravated by exercise eg, infection, renal failure, thyrotoxicosis. Acute myocarditis or pericarditis. Physical disability that would preclude safe and adequate test performance. Inability to obtain consent. Relative contraindications. Left main coronary stenosis or its equivalent. Moderate stenotic valvular heart disease. Electrolyte abnormalities. Tachyarrhythmias or bradyarrhythmias. Atrial fibrillation with uncontrolled ventricular rate. Hypertrophic cardiomyopathy. Mental impairment leading to inability to cooperate. Highdegree AV block. Note Relative contraindications can be superseded if benefits outweigh risks of exercise. Read carefully the exercise testing chapter.COSMED units should not be operated near explosive substances. Equipment should not be installed near electrical or magnetic devices such as xray

equipment, transformers or power lines. These devices couldCOSMED devices are not AP or APG units according to EN 60601-1 and shouldAvoid operating equipment in the presence of noxious fumes or in dusty environments. Do not place units near heat sources. Cardiopulmonary resuscitation equipment should be accessible in the case of an emergency.

<https://ednak.com/wp-content/plugins/formcraft/file-upload/server/content/files/1626f1bdc11787---bosch-shx57c06uc-manual.pdf>

Adequate floor space and easy access to the patient during exercise testing is necessary. Adequate ventilation should be maintained in the room the testing is performed. Getting started  
Environmental condition of use 13The device is intended for use in the electromagnetic environment specified below. The customer or the user of the device should assure that itEmissions test. Compliance. RF emissionsThe device uses RF energy only for its internal function. Therefore, its RF emissions are veryRF emissionsHarmonic EmissionThe device is suitable for use in all establishments, including domestic establishments andVoltage Fluctuations. Flicker EmissionCompliesThe device is intended for use in the electromagnetic environment specified below. The customer or the user of the device should assure that itImmunity test. Test levelElectrostatic dischargeIf floors areElectrical fastMains power quality should be that of a typical commercial orSurgeMains power quality should be that of a typical commercial orVoltage dips, shortMains power quality should be that of a typical commercial orIf the user of the device requiresHz magnetic fieldNota UT is the a.c. mains voltage prior to application of the test level. Getting started EMC 15The device is intended for use in the electromagnetic environment specified below. Test levelPortable and mobile RF communications equipment should beRecommended separation distance. Conducted RFField strengths from fixed RF transmitters, as determined by anInterference may occur in the vicinity of equipment markedNotesElectromagnetic propagation is affected by absorption and reflection from structures,AM and FM radio broadcast and TV broadcast cannot be predicted theoretically with accuracy. To assess the electromagnetic environmentIf the measured field strength in the location in which theIf abnormalThe device is intended for use in an environment in which radiated RF disturbances are controlled.

[akilciilacdernegi.com/ckfinder/userfiles/files/canon-pc921-user-manual.pdf](http://akilciilacdernegi.com/ckfinder/userfiles/files/canon-pc921-user-manual.pdf)

The customer or the user of the device canRated maximum outputNotesElectromagnetic propagation is affected by absorption and reflection from structures,Getting started EMC 17This manual is organized in the following chapters. Getting started. Describes the intended use of the device, how to properly use it and features of the unit and accessories. Installation. Lists the steps required to properly install the device. K5 Operation illustrates the functions of the device including managing data and test performance. System maintenance. Describes system maintenance procedures. Appendix. Contains information regarding the warranty, treatment of personal data, reference standards, technical features, predicted values andSoftware and test execution are described in the Software Manual. We recommend to read both manuals before using this device.The K5 consists of the following main parts. Some of the parts described below are options and are not included in the standard packaging.It is fixed to the patient during the test by an anatomic harness. In this configuration, the distance between subject's body and the transmittingThe PU contains the O<sub>2</sub> and CO<sub>2</sub> analyzers, sampling pump, transmitter, barometric sensors and electronics. It isThe K5 is provided with a 3.5" touchscreen LCD display with LEDbacklit TFT for optimal viewing in all lighting conditions. The LCD user interfaceThe touchscreen technology is resistive, so it can be used in outdoor conditions withThe bluetooth PC module is an option for the K5 Long distance module, and it is used together its antenna on the PC for receiving data from the K5It allows communication between the devicesGetting started System overview 19The battery charger allows the simultaneous charge of two batteries. Each battery can power the portable unit for about 4 hours.The turbine flowmeter assembly consists of a bidirectional turbine,



an optoelectronic reader and an optional wind cover.

The reader measuresThe device may be used to measure a wide flow range and is notDaily calibration of the turbine is not necessary,The wind cover is mounted on the reader and it is used for protecting the turbine from the wind for outdoor applications, in order to avoid errorsThe flowmeter can be used for all tests.The exercise test masks are made of silicone and may be reused after proper disinfection see the chapter Maintenance. These blue masks are available in different sizes and should be assembled the included head cap as shown in the chapter Exercise testing.The optoelectronic readerThe HR probe consists of two parts that can be fixed by means of automatic buttons the elastic belt and the transmitter. The belt should be placedThe oximeter probe should be placed on the patient's finger to measure oxygen saturation at rest or during exercise.The pressure regulator is connected to the calibration cylinder for the calibration of the K5 unit. The gas exiting from the regulator enters directlyGetting started System overview 21The USB cable is used to connect the K5 unit to the PC, for downloading tests or for use the device in laboratory mode.The earphones are used for communicating with the subject in outdoor telemetric applications.The O2 sensor included in the packaging as a spare part must be installed by the user before starting using the device, and it must be replacedIt measures the O2 concentration in the gas sampled by the device.Before using the K5 unit, it must be warmed up for the required amount of time. The warmup time duration depends on which test is beingTest. Warmup time minutes. CPET exercise testGetting started System warmup 23Before operating the K5 you should inspect the equipment and complete the product registration.When opening your product you should assure that the package contains all items listed below. If there are any missing or damaged parts youThe device is made of a main unit and one or more optional modules.

The content of the main unit is listed in the following, the content of theK5 standard packaging. Code. Quantity. DescriptionNote The codes and the packaging shown in the tables below refer to the module if purchased together with the K5Code. DescriptionLong Distance bluetooth module standard packaging. DescriptionInstallation Before starting 27. The following options are available with the K5. DescriptionCode. DescriptionMain spare partsBefore operating the system you should make sure that environmental and operational conditions have been met see Chapter 1. Note The first time you use the device, charge the battery until they are completely charged see below.Note The USB connection to PC or any other USB devices doesn't charge the battery. Safety warningsThe case it not sealed. Do not open the charger or power supply case. No user serviceable parts are inside. Do not cover the fan exhaust or obstruct the airflow, this will cause overheating. User only the manufacturer's power supply and observe terminal polarity. Place the charger in a cool spot, away from external heat sources. CAUTION during recalibration the charger may become warm. Use the chargerPlace the charger on a flat, level surface, away from source of heat and moisture.Charging batteries. Note The batteries must be replaced when they do not maintain their charge for enough time. Please contact thePlace the batteries into either battery bay, ensuring that the 5way connector is fully seated. The LEDs in the status window will provide statusThe status of the battery is indicated by the LEDs visible in the status windowBattery chargingBattery fully chargedBattery in calibration modeBattery fuel gauge calibratedBattery fuel gauge in need of recalibrationError. Recharge time. Each bay is completely independent, and the battery charger can charge two batteries simultaneously. Battery can be charged in about two hours, while the recalibration procedure requires about 911 hours.

Installation Preliminary operations 29Recalibration consists of a charge, followed by a calibration discharge. Finally the battery is given a regular charge. A calibration cycle is faster if theIf fuel gauge recalibration is needed, the red LED on the charger will flash upon insertion of the battery. The user can either calibrate the fuel gaugeFor starting the recalibration, press the calibration button corresponding to the battery to be recalibrated. If the button is not pressed, the chargerAt

the end of the calibration the blue LED will stay constant indicating a fully calibrated fuel gauge. The blue LED will flash to indicate that the battery is undergoing the recalibration cycle. Note that calibration is initiated each time the button is pressed. What is recalibration and why is it needed? As the battery ages and is used, its available capacity shrinks. So, with each cycle, K5 runtime gets a little bit less. A good rule of thumb is that Li-Ion The fuel gauge not only provides the battery's remaining capacity, it also gives an estimated accuracy figure known as the "MaxError". This keeps Recalibration is used to reset the fuel gauge to match the actual capacity of the battery. The portable unit can be supplied either by the Power supply adapter or by rechargeable batteries. During warmup, it is recommended to supply it. The external Power supply adapter can be connected between the AC mains plug and the Top side. Warning: In order to obtain the required performances in terms of degree of protection against the ingress of liquids Bottom side. In the bottom side is located a threaded slot for connection to a tripod or to the harness. In order to start using the device for the first time, please connect the O2 sensor and the battery. Refer to the below sections in order to perform To turn on or off the device, please press and hold the The K5 uses O2 and CO2 heated sensors. In order to ensure accurate gas measurements, you must wait at least 45 minutes warmup time at an.

Calibration or testing before warmup time is To start the warmup period, connect the battery to the K5 and turn the unit on. In order to calibrate the sensors you need to have available calibration cylinder with the following gas concentration. Cylinder. Recommended gas mixture. Calibration. O2 16%, CO2 5%, N2 Balance. For the calibration procedure, see the Calibration chapter. Installation Preliminary operations 31. Note The unit is supplied without the O2 sensor installed. Before using the device, please install the O2 sensor. The included O2 sensor has an expiration date printed on the package as well as on the sensor itself indicating the latest date for the installation. Expected Sensor Lifespan is about 12 months after the package is opened. COSMED offers a 6 month warranty on the O2 sensor from the date of purchase. Important notice Recommended replacing interval for the sensor is 12 months, the sensor should not be used after. Replace the permature at the same time. Remove the O2 cap with the proper key align the arrow with the symbol. Place the O2 sensor in the dedicated slot. Screw it firmly by means of the tool included in the K5 packaging. Connect the 3pin connector to the sensor. Replace the cap with the proper key align the arrow with the symbol. Calibrate the sensor to ensure proper functionality To replace the sensor, follow the procedures below. Remove the Battery cap with the proper key align the arrow with the symbol. Remove the yellow protective cap of the battery. Place the battery in the dedicated slot. Replace the cap with the proper key align the arrow with the symbol. Sometimes you might need to change the battery during the test. To do this you must change the battery in the shorter time possible. The Portable. Unit does not transmit data while it is not powered. Warning During testing make sure to change the battery as fast as possible, since a long time could compromise the K5 is a portable system with a total weight lower than 1 kg.

COSMED has developed a special harness to fix the unit to any subject. There are two K5 is provided with a turbine flowmeter that can be easily disassembled for allowing cleaning and disinfection. Note In order to preserve items composing the mask, it is recommended to grease periodically O-rings in the The following steps are described to fix the unit to the subject or telemetric use. Fixing HR elastic belt on the subject. To assemble the HR belt The transmitter should be worn against bare skin to ensure successful operation. If a transmitter is worn over a shirt, the shirt should be wet To acquire the most accurate HR signal you should place the HR probe as close as possible to the HR belt. Fixing the mask to the subject's face. Fix the mask as illustrated in the picture below. Adjust the elastic bands on the head cap as necessary to eliminate possible leaks and create a tight Positioning ECG electrodes if an ecg is used. Correct electrode placement is important for acquiring a successful ECG signal. Patient preparations that may be performed to improve the signal Note The patient cable and the transmitter are not waterproof. You should prevent any liquids from penetrating Installation

Patient's preparation 35Limb electrodes for the arms should be placed in the subclavicular areas. Limb electrodes for the legs should be placed on the trunk at the level of the bottom rib. Warning QRS morphology may be slightly different from the standard ECG due to the different positioning of lowerK5 unit communicates with the PC via Bluetooth or via USB. Both connections can be used for realtime testing laboratory mode or forFor a description of these modes, see the chapter K5 operation. Note The USB connection to PC or any other USB devices doesn't charge the battery.To activate the Bluetooth connection, please enable the Bluetooth communication on the PC and associate the device with the PC.

<https://congviendis.vn/vi/3m-espe-capmix-manual>